



**OTN**

innovations

**BADAL<sup>®</sup>**

MDR: 2017/745



## **OTNI 25 LUCI Nightcap**

Nightcap for sleeping and bathing

---

“(EN) OTNI 25 LUCI Nightcap Instruction for use – V2.pdf”

**Material:** Silicone - PETG

**REF**

OTNI 25

**MD**

Medical device class I



OTN Innovations B.V.  
Simon Stevinweg 48  
6827BT Arnhem The Netherlands



## EN – Instruction for use

### 1. Intended use

The OTNI 25 LUCI Nightcap is solely intended to protect the *male part* and surroundings during sleep, bathing, and other activities when the exo-prosthesis has been removed.

### 2. Note before and during use

Check the contents of the package for damage before use. The Nightcap should never be processed, modified, or otherwise adjusted. Any modification requires written permission from the manufacturer.

### **3. Packaging and sterility**

This product is delivered non-sterile in protective packaging.

### **4. Usage**

No special tools are needed to use the Nightcap. When using it for the first time, consider the following:

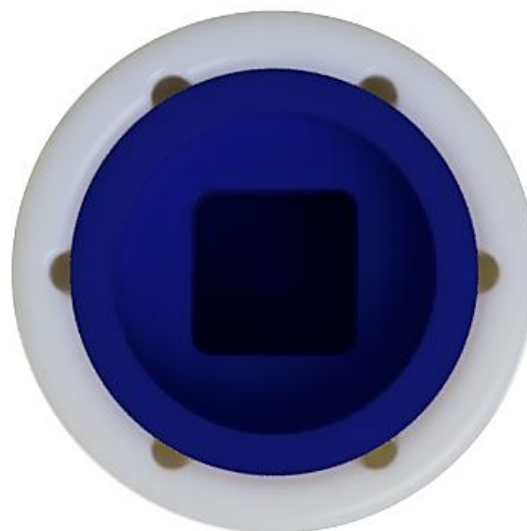
- Clean the BADAL X double cone adapter and male part before using the Nightcap (see 10. maintenance)
- Slide the Nightcap over the male part until it fits completely
- The nightcap is now attached and can be removed in the same way
- If properly attached, the nightcap will naturally stay on the male part.

### **5. Contra indications**

- Silicone allergy

## **6. Materials**

This product is made of PETG (white ring) and silicone (blue interior).



## **7. Possible harmful side effects**

The expected lifespan of this product can be shortened by excessive exposure to UV (sun) light.

## **8. Post-operative monitoring**

No post-operative checks are required in relation to the use of this specific product.

## **9. Compatibility**

*OTN Innovations* guarantees the compatibility of this product when used with BADAL X LUCI connectors.

## 10. Maintenance

The product should be cleaned daily by the end user. To clean the nightcap, one can rinse and wash it by hand. If necessary, the silicone (blue) interior can be separated from the hard (white) ring for optimal cleaning of the nightcap. This can be done by pushing the silicone interior down with your fingers from the top until it is detached. From the top, the silicone interior can also be pushed back in, possibly with the help of tap water.



**Caution!** The removal of the silicone interior should be done carefully to prevent tearing of the silicone.

## **11. Warranty**

The warranty from OTN Innovations on the OTNI 25 LUCI Nightcap is 6 months from the date of shipment. This warranty covers malfunctions due to material and manufacturing defects.

## **Alertness**

OTN Innovations is committed to doing everything possible to market a safe and reliable product. The relevant standards have been applied for this product, and experts have been consulted. If you believe that this product does not meet the quality and standard you expect, please report your comments to OTN Innovations via the email address: [info@otninnovations.com](mailto:info@otninnovations.com)

---

**This document is also available in:**



**Nederlands**



**English**



**Deutsch**



**BADAL<sup>x</sup>** <sup>®</sup>  
**OTN Implants**